

Structural Measurements



Designer Cabinets
 287 Gold Rush Road
 Lexington, KY 40503
 info@designercabinetsonline.com
 Toll Free: 888-565-6106 Fax: 859-278-1027

For Serious Buyers Who Want to Save Serious Money

WINDOWS

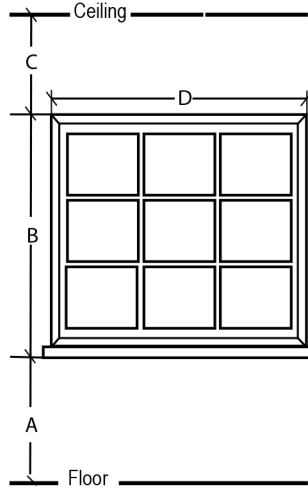
Measure each window in the kitchen and record below. All measurements should be from the outside edge of the trim. If window treatments are to be used they will be:

inside or outside mount

(Allow 3" on each side of the window for outside mount window treatments.)

Record all measurements in inches

Window	A	B	C	D
1				
2				
3				
4				



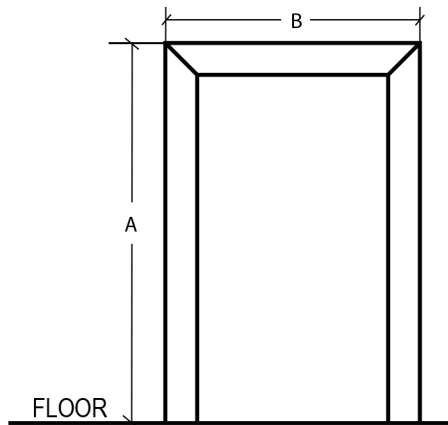
DOORS

Measure each door in the kitchen and record below. All measurements should be from the outside edge of the trim. If patio doors are to have draperies or blinds, they will be:

inside or outside mount

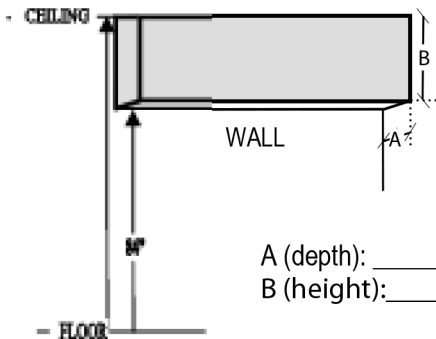
Record all measurements in inches

Door	A	B	Hinge (L/R)	Swing (In/Out)
1				
2				
3				
4				



SOFFIT

A soffit is the bulkhead between the ceiling and the top of the cabinets. Distance from the floor to the soffit should be at least 84". Allow 1/4" more if you install a 84" tall cabinet. Soffit depth may vary, however normal depth is 13" or 1" deeper than a wall cabinet. *Note: Check the soffit height and depth to ensure the cabinets do not extend beyond the existing soffits.*

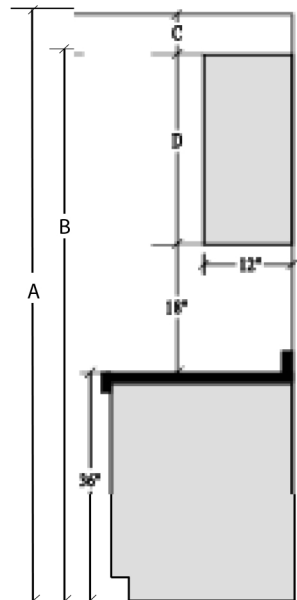


A (depth): _____ inches
 B (height): _____ inches

ROOM DETAILS :

Record all measurements in inches

- _____ A: Ceiling Height
- _____ B: Cabinet Height
- _____ X C: Soffit (depth & height)
- _____ D: Wall Cabinet Height



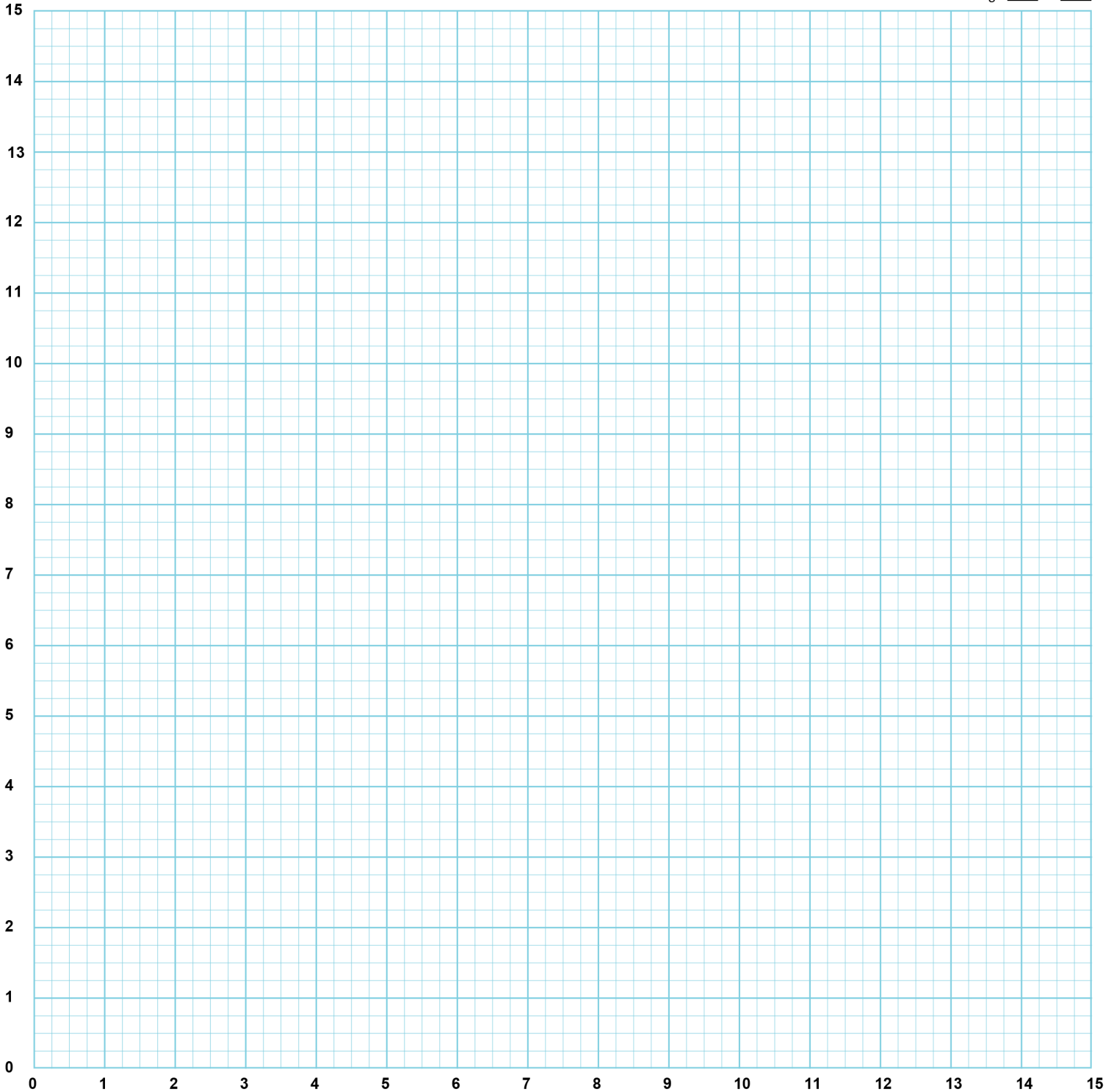


Designer Cabinets
 287 Gold Rush Road
 Lexington, KY 40503
 info@designercabinetsonline.com
 Toll Free: 888-565-6106 Fax: 859-278-1027

For Serious Buyers Who Want to Save Serious Money

Scale: 1/2" = 1 Foot

Page ____ of ____



CUSTOMER INFORMATION

Name _____

Address _____

Phone _____

Fax _____

E-mail _____

CABINET INFORMATION

Manufacture _____

Door Style _____

Finish/Color _____

CUSTOMER APPROVAL

 Date: _____